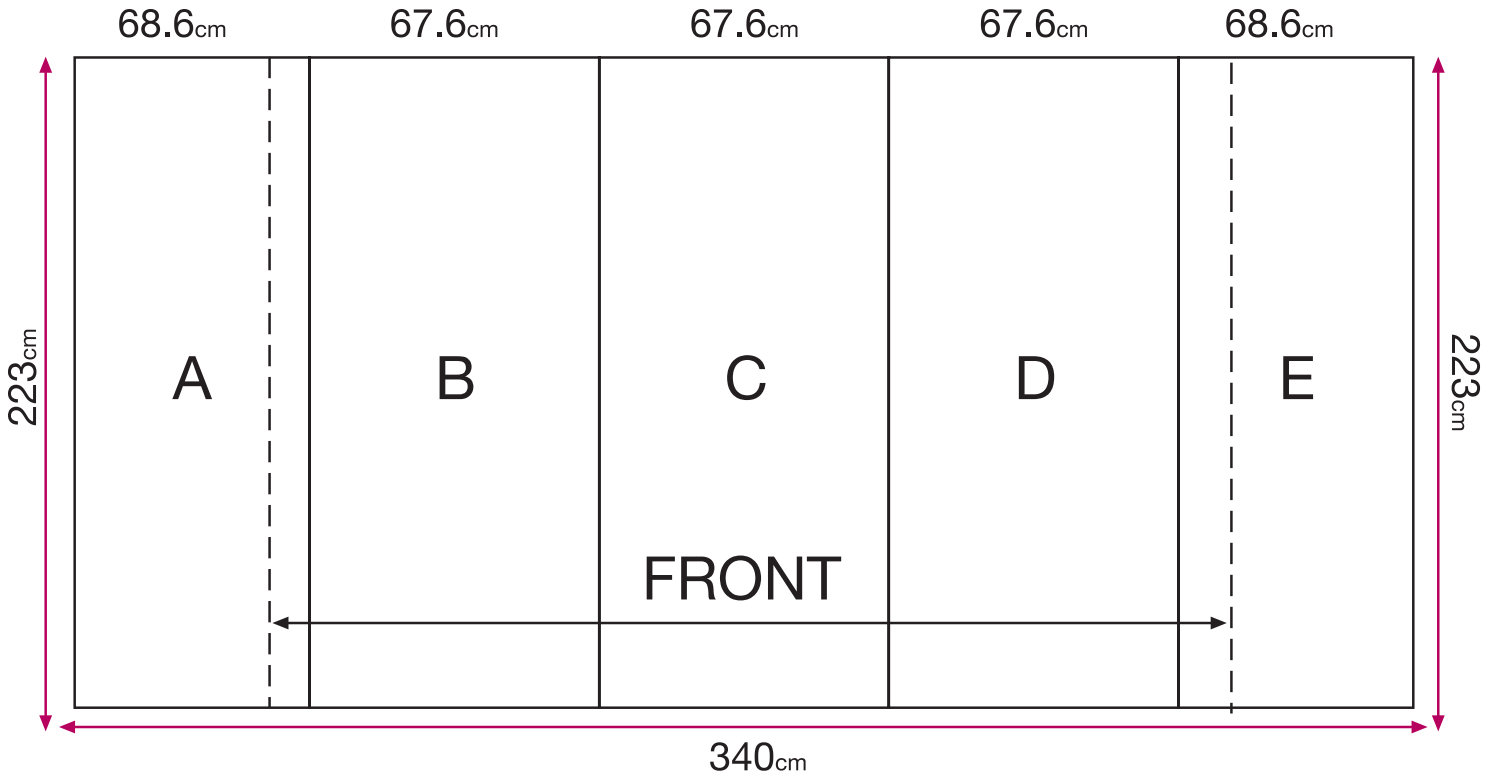


Full Magnet Pop up display 3x3

340_{cm} x 223_{cm}



Preparing artwork:

- Please convert all fonts to path.
- Please make sure all images are at least 120 dpi and scaled 1:1.
- You can also compress the file (zip with winzip in PC or sit with stuffit expander in Mac) for smaller size upload.

- Please read the instructions for the right measurement of your graphic:

custom: 340x223 c"m or proportional, bleed: 1 c"m Nett dimens 338x221

The graphic layout is prepared as 1 piece!

and is divided into 5 panels (3 central and 2 side panels) during the printing process.

For the graphic layout, prepare first a grid, where guides mark the bleed and panels division. Important graphics should be placed on the 3 central panels. The 2 side panels are only partly visible (when viewed from the front). The graphics background should exceed into the bleed area.

it is advisable not to have letters placed on the dividing lines (between panels), but to have them placed (if possible) on either side.

we can accept artwork in the following format:
Adobe Acrobat (pdf press quality)

Upload your artwork:

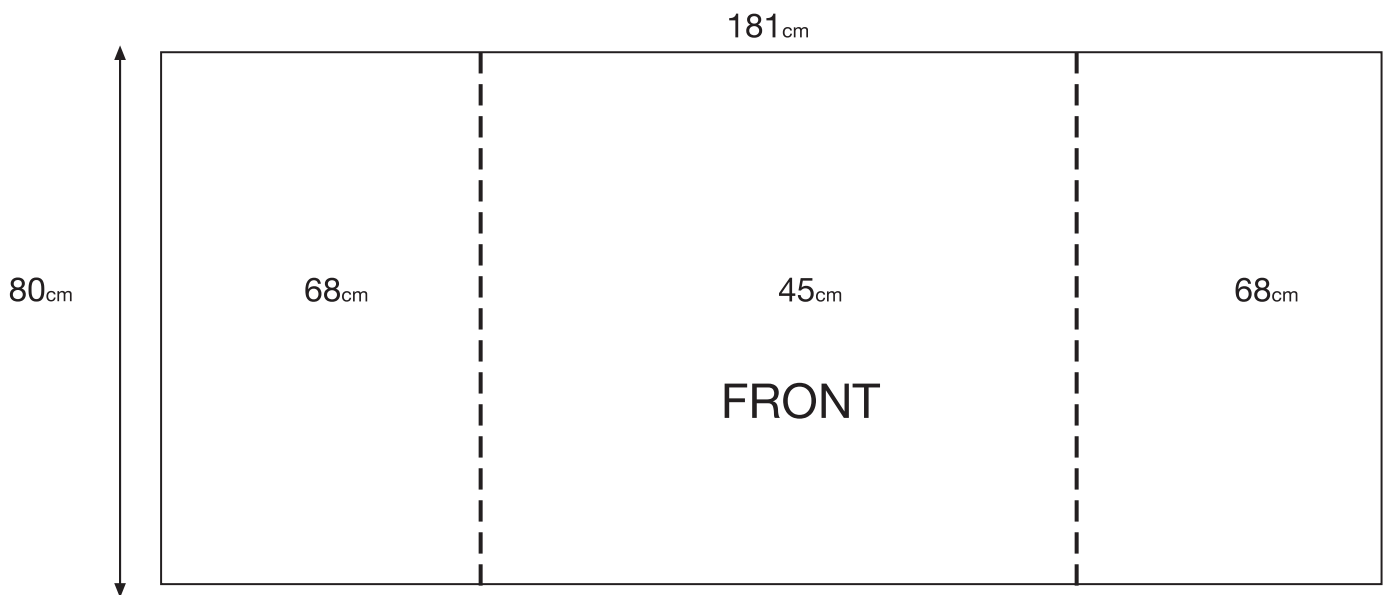
You can send your artwork via a free file transfer

Upload your file in this link: <http://dropbox.yousendit.com/rollup4pop>

Please make
sure that
overprint is
unmarkerd !!!

Counter for Pop-Up

80_{cm} X 181_{cm}



Preparing artwork:

- Please convert all fonts to path.
- Please make sure all images are at least 120 dpi and scaled 1:1.
- You can also compress the file (zip with winzip in PC or sit with stuffit expander in Mac) for smaller size upload.
- **Please read the instructions for the right measurement of your graphic:**

custom: 181x80 c”m or proportional, without bleed.
Important graphic elements and text should be in the center-front
Visible area limits, Graphics and Text limits: 45 c”m in the center.

we can accept artwork in the following formats:
Adobe Acrobat (pdf press quality)
Adobe Photoshop (eps)

Upload your artwork:

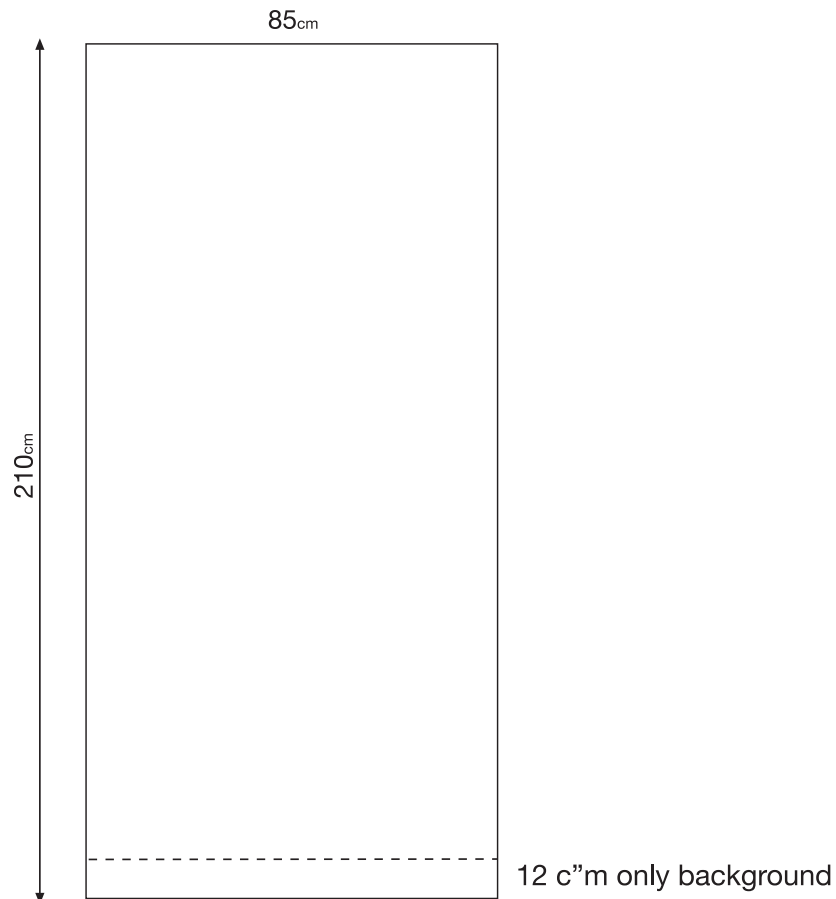
You can send your artwork via a free file transfer.

Upload your file in this link:

<http://dropbox.yousendit.com/rollup4pop>

Please make
sure that
overprint is
unmarked !!!

Roll up display banner 85_{cm} X 210_{cm}



Preparing artwork:

- Please convert all fonts to path.
- Please make sure all images are at least 120 dpi and scaled 1:1.
- You can also compress the file (zip with winzip in PC or sit with stuffit expander in Mac) for smaller size upload.

- Please read the instructions for the right measurement of your graphic:

custom: 85x210 c"m or proportional, without bleed.
Important graphic elements and text should end 12 c"m before the 210 c"m.
Visible area limits, Graphics and Text limits: 198 c"m.

we can accept artwork in the following formats:
Adobe Acrobat (pdf press quality)
Adobe Photoshop (eps)

Please make
sure that
overprint is
unmarked !!!

Upload your artwork:

You can send your artwork via a free file transfer.

Upload your file in this link:

<http://dropbox.yousendit.com/rollup4pop>