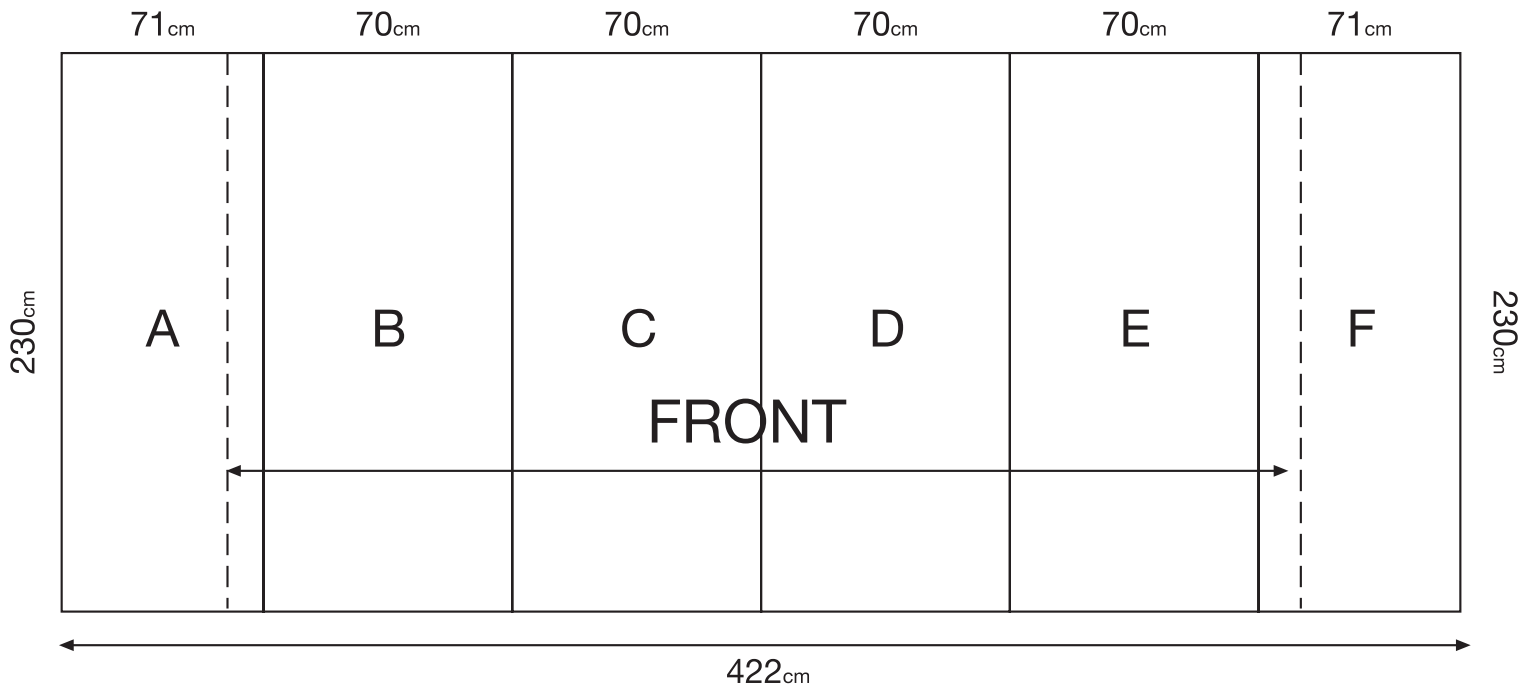


# Pop up display 4x3 422<sub>cm</sub> x 230<sub>cm</sub>



## Preparing artwork:

- Please convert all fonts to path.
- Please make sure all images are at least 120 dpi and scaled 1:1.
- You can also compress the file (zip with winzip in PC or sit with stuffit expander in Mac) for smaller size upload.

- Please read the instructions for the right measurement of your graphic:

custom: 422x230 c”m or proportional, bleed: 1 c”m Nett dimens 420x228.

The graphic layout is prepared as 1 piece!

and is divided into 6 panels (4 central and 2 side panels) during the printing process.

For the graphic layout, prepare first a grid, where guides mark the bleed and panels division.

Important graphics should be placed on the 4 central panels. The 2 side panels are only partly visible (when viewed from the front). The graphics background should exceed into the bleed area. it is advisable not to have letters placed on the dividing lines (between panels), but to have them placed (if possible) on either side.

we can accept artwork in the following formats:

Adobe Acrobat (pdf press quality)

Adobe Photoshop (eps)

## Upload your artwork:

You can send your artwork via a free file transfer

Upload your file in this link:

<http://dropbox.yousendit.com/rollup4pop>

Please make  
sure that  
overprint is  
unmarked !!!